

GENERAL NOTES

THIS SURVEY WAS PREPARED WITHOUT BENEFIT OF A TITLE REPORT WHICH MAY REVEAL ADDITIONAL CONVEYANCES, EASEMENTS, OR RIGHTS-OF-WAY NOT SHOWN HEREON.

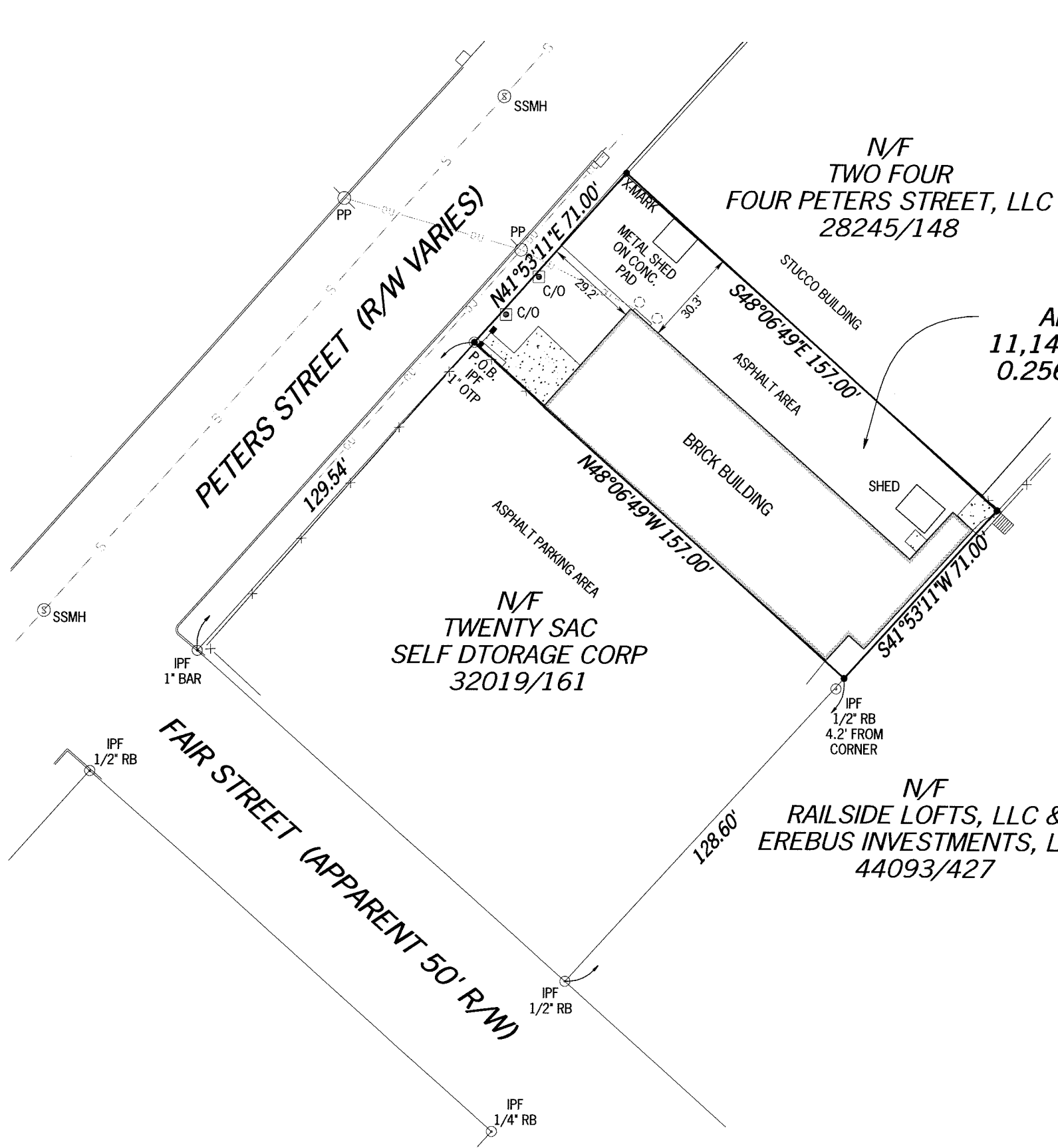
EQUIPMENT USED FOR ANGULAR & LINEAR MEASUREMENTS: LEICA TCRA 1103 ROBOTIC (DATE OF LAST FIELD VISIT: 10/7/09)

THE FIELD DATA UPON WHICH THIS SURVEY IS BASED HAS A CLOSURE PRECISION OF ONE FOOT IN 64,453 FEET AND AN ANGULAR ERROR OF 5.0" PER ANGLE POINT AND WAS ADJUSTED USING LEAST SQUARES METHOD.

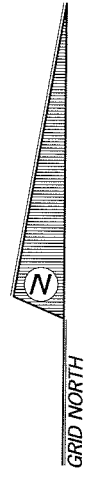
THE PLAT HAS BEEN CALCULATED FOR CLOSURE AND IS FOUND TO BE ACCURATE TO WITHIN ONE FOOT IN 1,000,000+ FEET.

BEARINGS SHOWN ON THIS SURVEY ARE FROM GRID NORTH. (GA NAD 83 WEST ZONE)

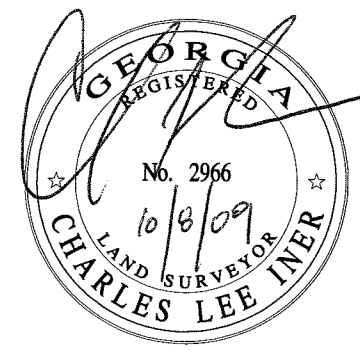
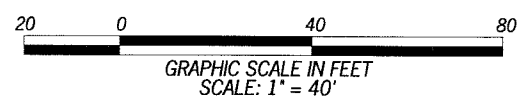
THE UNDERGROUND UTILITIES SHOWN HAVE BEEN LOCATED FROM ABOVE GROUND FIELD SURVEY INFORMATION. THE SURVEYOR MAKES NO GUARANTEES THAT THE UNDERGROUND UTILITIES SHOWN COMPRISE ALL SUCH UTILITIES IN THE AREA, EITHER IN-SERVICE OR ABANDONED. THE SURVEYOR FURTHER DOES NOT WARRANT THAT THE UNDERGROUND UTILITIES SHOWN ARE IN THE EXACT LOCATION INDICATED ALTHOUGH THEY ARE LOCATED AS ACCURATELY AS POSSIBLE FROM INFORMATION AVAILABLE. THE SURVEYOR HAS NOT PHYSICALLY LOCATED THE UNDERGROUND UTILITIES.



AREA:
11,147 SQ.FT.
0.256 ACRES



- LEGEND**
- POB POINT OF BEGINNING
 - IPS IRON PIN SET (1/2" ReBar)
 - IPF IRON PIN FOUND
 - RB REBAR
 - OU OVERHEAD UTILITIES
 - EP EDGE OF PAVEMENT
 - PP POWER POLE
 - RCP REINFORCED CONCRETE PIPE
 - BC BACK OF CURB
 - CLF CHAIN LINK FENCE
 - EP EDGE OF PAVING
 - FND FOUND
 - SSMH SEWER MANHOLE
 - FES FLARE END SECTION
 - OCS OUTLET CONTROL STRUCTURE
 - HW HEADWALL
 - INV INVERT
 - SWCB SINGLE WING CATCH BASIN
 - HDPE HIGH-DENSITY POLYETHYLENE
 - CMP CORRUGATED METAL PIPE



PARCEL# 14-0085-0003-025-3
264 PETERS STREET
DEED BOOK 47928 PAGE 540
LAND LOT 84, 14TH DISTRICT
FULTON COUNTY, GEORGIA

NO.	DATE	REVISIONS

A BOUNDARY SURVEY PREPARED BY:
POINT TO POINT LAND SURVEYORS
810 Jackson Street
Locust Grove, Georgia 30248
(p) 678.565.4440 (f) 678.565.4497
(w) pointtopointsurvey.com

A BOUNDARY SURVEY PREPARED FOR:
SAP PETERS STREET, LLC

DRAWN BY: KJW
CHECKED BY: CDW
APPROVED BY: CLI
DATE: Oct. 8, 2009
P2P_JOB # - 2009-531